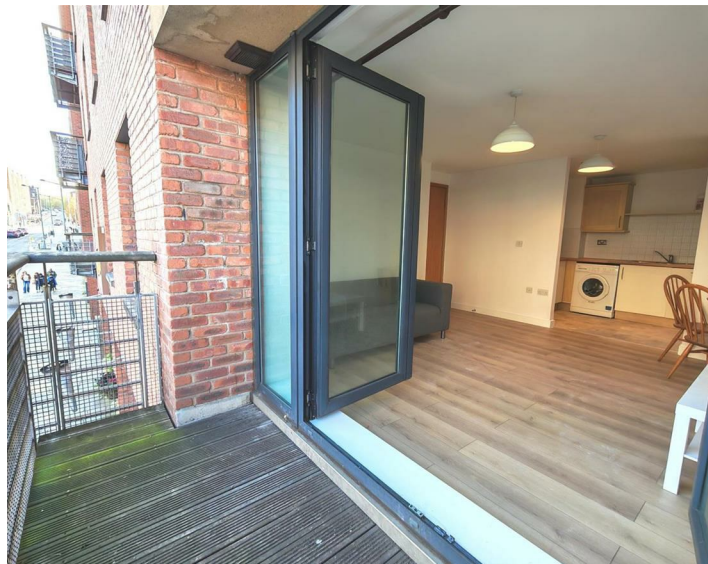




Apt 7, Manhattan Place Madison Square, Liverpool, L1 5BF
£1,150 Per Month

www.cityresidential.co.uk



About the Property

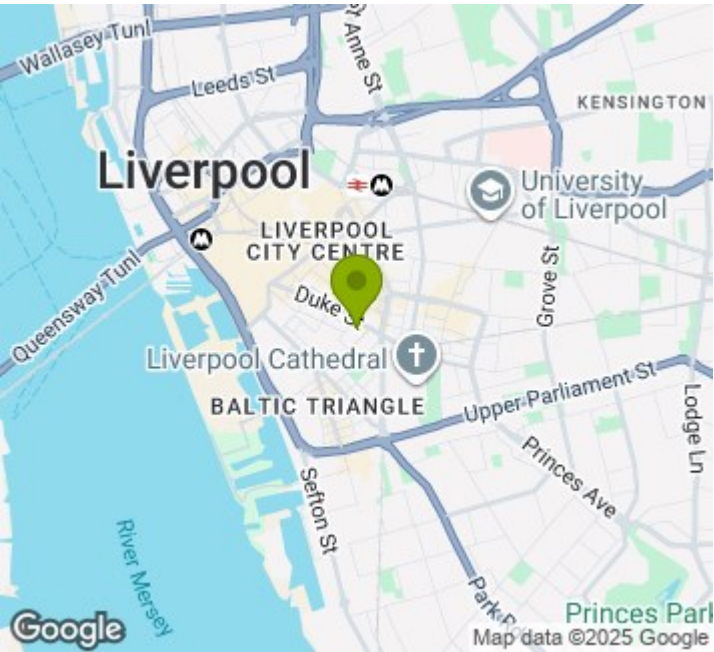
Available Now – Superb 2 Bedroom Apartment in the Heart of Ropewalks!

Looking for a stylish city-centre home in one of Liverpool’s most sought-after districts? This fantastic apartment at Manhattan Place (East Village) puts you right in the middle of the vibrant Ropewalks quarter – surrounded by bars, restaurants, independent shops and excellent transport links.


- The accommodation comprises:
- Secure communal entrance with fob access, lift and stair access to all floors
 - Entrance hall
 - Spacious open-plan living/dining area with access to a private balcony overlooking Duke Street
 - Modern fitted kitchen
 - Master bedroom with en-suite shower room
 - Second double bedroom
 - Main bathroom

Properties in this development are always in high demand – early viewing is highly recommended.
Contact City Residential today to arrange your viewing!

- Ropewalks location!
- Balcony overlooking Duke Street
- Move In Ready
- Fully Furnished
- First Floor Apartment
- Early Viewings Highly Recommended
- EPC Rating - B
- Council Tax Band - C
- Deposit Payable £1326



Energy Efficiency Rating

	Current	Potential
Very energy efficient - lower running costs		
(92 plus) A	82	86
(81-91) B		
(69-80) C		
(55-68) D		
(39-54) E		
(21-38) F		
(1-20) G		
Not energy efficient - higher running costs		
England & Wales	EU Directive 2002/91/EC 	



City Residential
81/87 Victoria Street, The Old Haymarket, Liverpool L1 6DG
T: 0151 231 6100 F: 0151 231 6105
E: sales@cityresidential.co.uk



WWW.
cityresidential
.co.uk